

PTCP: The Mathematical Overlay

Democratizing AI infrastructure on
commodity hardware.

The race for AI determinism is bottlenecked by physical reality

Waiting for priority allocations of specialized silicon or future open-standard chips halts critical progress today.

Exponential AI Workload Demands

The Hardware Bottleneck

Supply chain delays and proprietary silicon lock-in.

Standard Ethernet Capabilities

$$S(s) = -\log(p(s))$$

$$S(s) = -\log(p(s))$$

$$S(s) = -\log(p(s))$$

$$S(s) = -\log(p(s))$$

$$S(s) = -\log(p(s))$$

$$S(s) = -\log(p(s))$$

Enter PTCP: Mathematically predictive pacing over commodity hardware

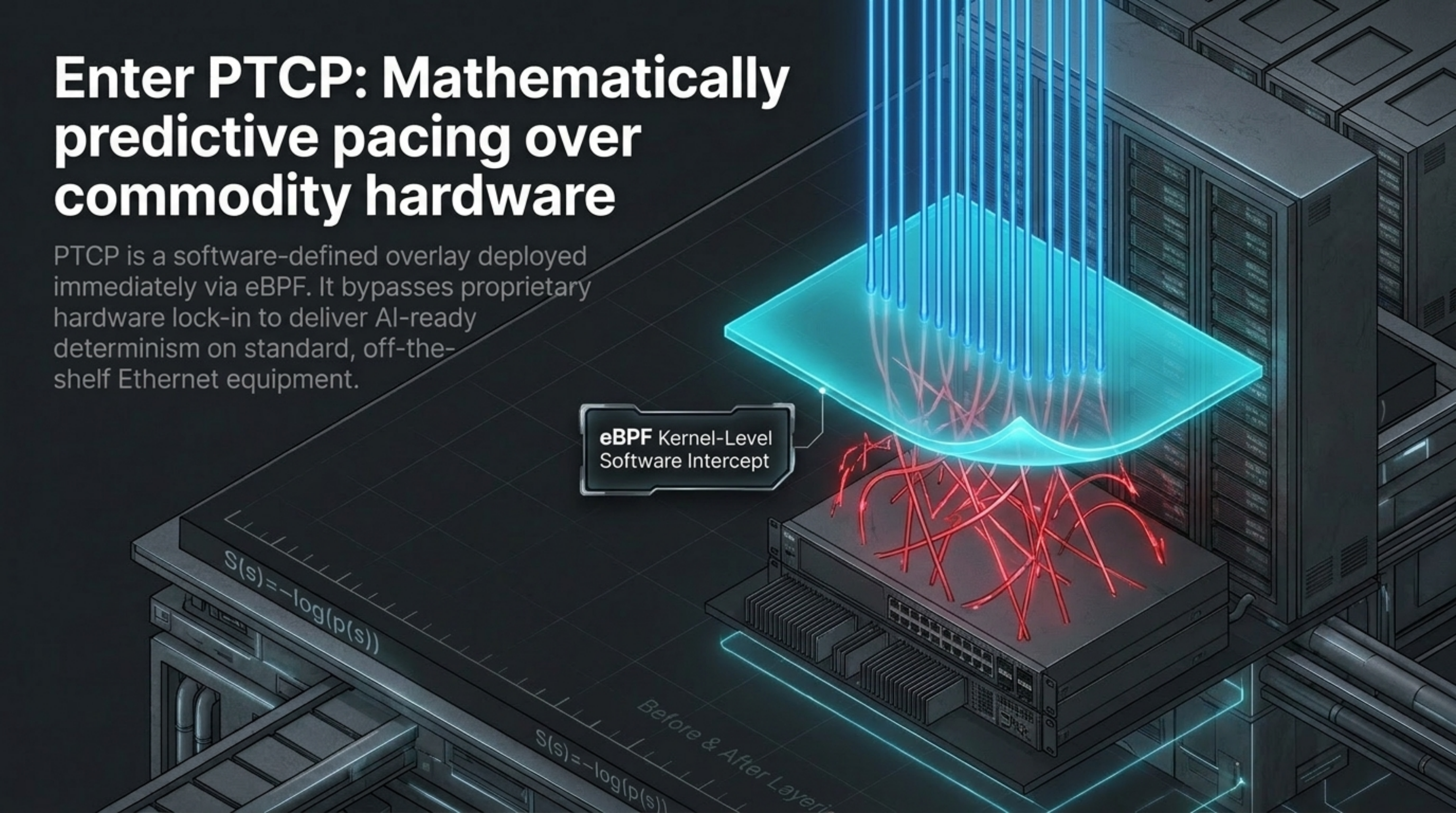
PTCP is a software-defined overlay deployed immediately via eBPF. It bypasses proprietary hardware lock-in to deliver AI-ready determinism on standard, off-the-shelf Ethernet equipment.

eBPF Kernel-Level Software Intercept

$$S(s) = -\log(p(s))$$

$$S(s) = -\log(p(s))$$

Before & After Layering

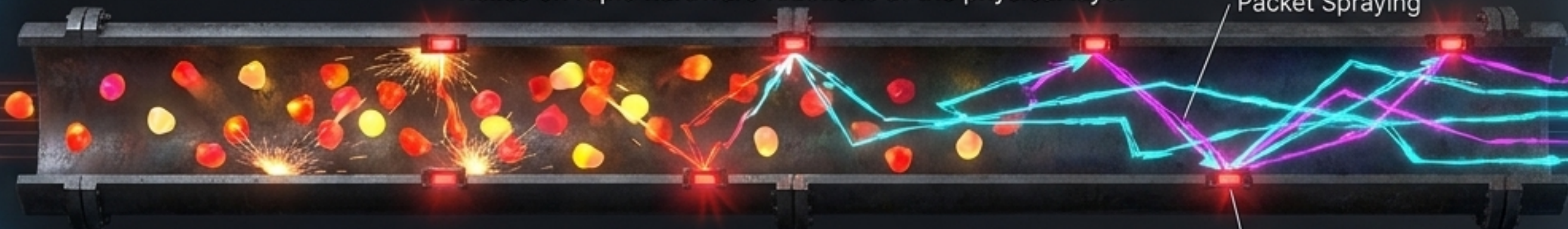


Software prediction supersedes reactive hardware telemetry

While open standards and proprietary silicon rely on reacting to congestion after it happens, PTCP mathematically predicts and spaces data to prevent congestion entirely.

Reactive Telemetry (Legacy/UEC)

Relies on rapid hardware reactions at the physical layer



Luminous Mathematics Over Rigid Isometrics

Predictive Mathematical Pacing (PTCP)

Anticipates flow via host-OS algorithms, eliminating collisions before they hit the physical layer



Luminous Mathematics Over Rigid Isometrics

A horizontal foundation across the entire infrastructure stack

PTCP's predictive nature fundamentally upgrades performance, security, and synchronization simultaneously.

$$S(s) = -\log(p(s))$$

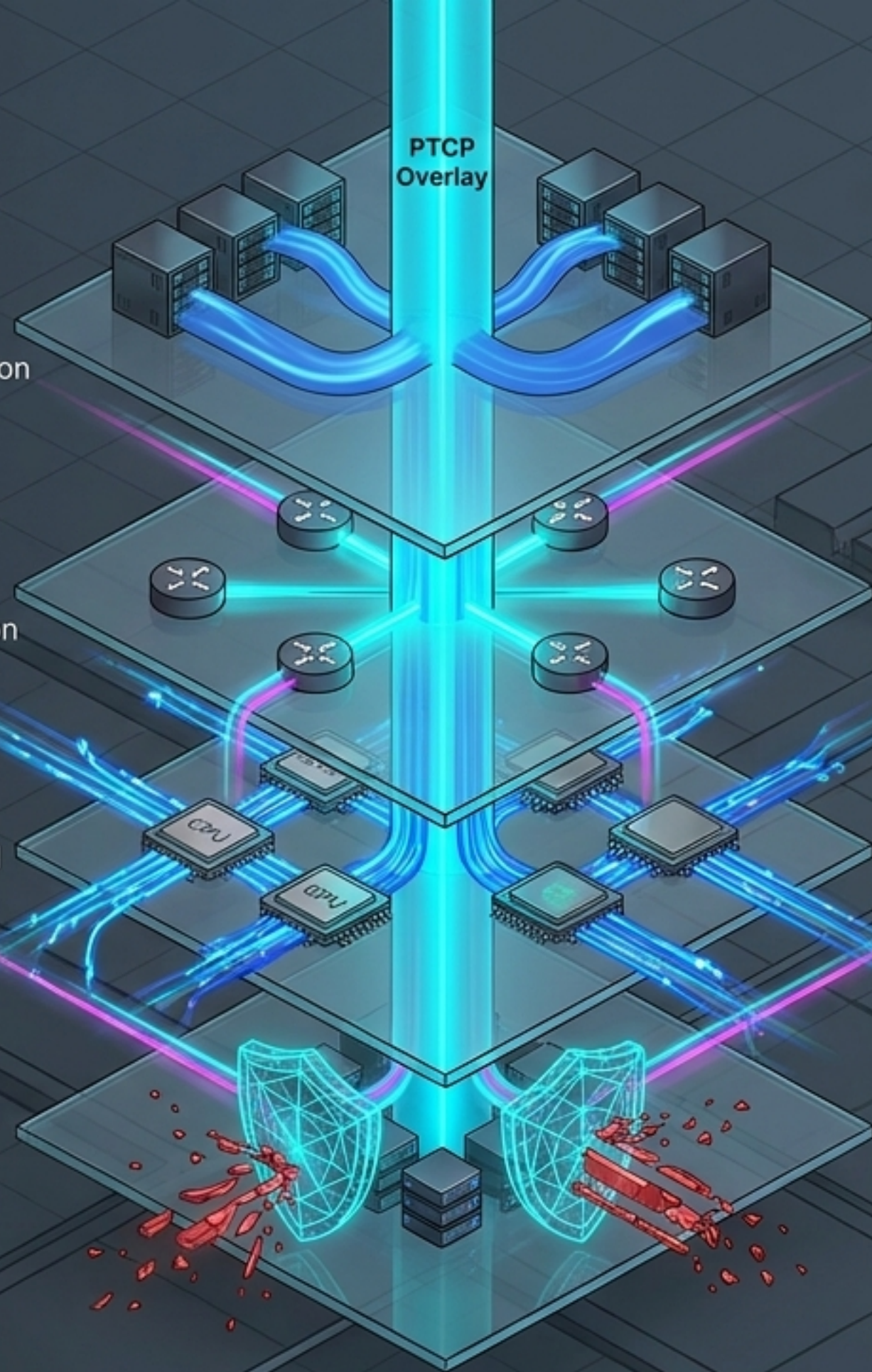
$$S(s) = -\log(p(s))$$

Storage:
High-Speed Synchronization

Network:
Commodity Transformation

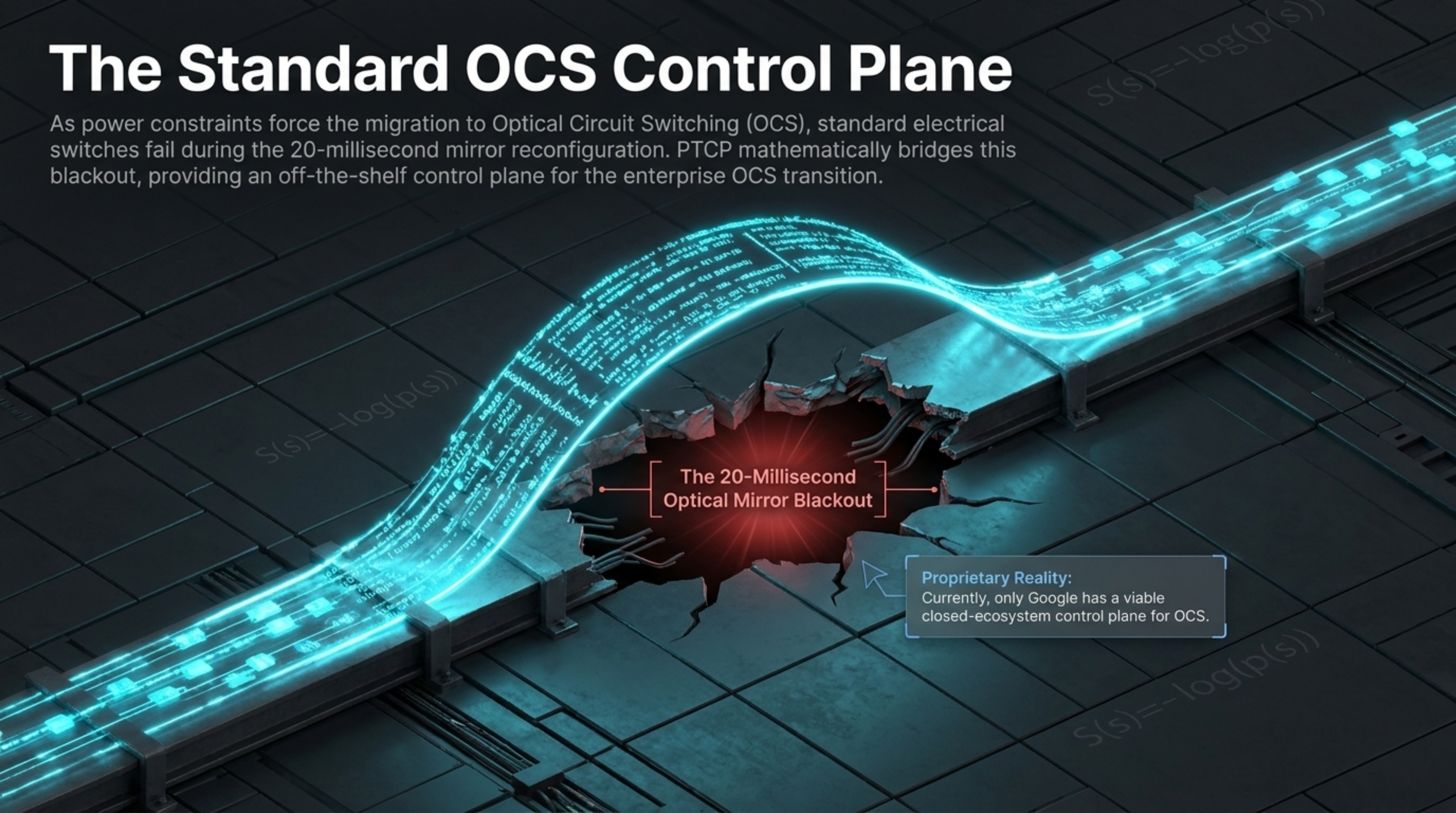
Compute:
Democratized Hyperscale

Security:
Mathematical Zero-Trust



The Standard OCS Control Plane

As power constraints force the migration to Optical Circuit Switching (OCS), standard electrical switches fail during the 20-millisecond mirror reconfiguration. PTCP mathematically bridges this blackout, providing an off-the-shelf control plane for the enterprise OCS transition.



The 20-Millisecond
Optical Mirror Blackout

Proprietary Reality:

Currently, only Google has a viable closed-ecosystem control plane for OCS.

Absolute Zero-Trust at the Tactical Edge

PTCP integrates native zero-trust security without degrading speed. Its PoL-TT anomaly detection feature inherently secures high-speed computing clusters by mathematically defining and naturally dropping pathological data.



The Battlefield Diagnostic: Where PTCP Wins (and Loses)

A brutal assessment of PTCP against specialized silicon, massive infrastructure overhauls, and closed ecosystems.

$$S(s) = -\log(p(s))$$

$$S(s) = -\log(p(s))$$

Competitor Category	Core Methodology	The PTCP Advantage	The PTCP Disadvantage
Proprietary Hardware (InfiniBand, Spectrum-X)	Hardware-level credit-based flow control.	Eliminates vendor lock-in and slashes CapEx.	Cannot physically control silicon; InfiniBand is inherently faster at the nanosecond level.
Open Standards (UEC)	Packet spraying and rapid hardware reactions.	Deployable today via eBPF on existing hardware.	UEC has total industry backing; PTCP must prove its math beats UEC silicon.
Hyperscaler Cloud (AWS SRD, Google Apollo)	Vertically integrated closed ecosystems.	Democratizes tier-1 networking for Tier 2/3 clouds.	Hyperscalers own their stack for perfect co-design; PTCP must adapt to disparate environments.
Silicon Disruptors (DriveNets, Enfabrica)	Rip-and-replace new chassis and chips.	Zero hardware friction within existing topologies.	In greenfield builds, specialized chips physically eliminate bottlenecks PTCP works around.

$$S(s) = -\log(p(s))$$

$$S(s) = -\log(p(s))$$

The Disruptive Economics of a Mathematical Overlay

By separating determinism from physical silicon, PTCP radically compresses deployment timelines and alters the economics of high-performance computing.

Zero Hardware Friction



No ripping and replacing of cables, switches, or topologies.

Immediate Deployment



Executable today via eBPF kernel intercepts.

Drastic CapEx Drop



Avoids expensive proprietary silicon; utilizes off-the-shelf Ethernet.

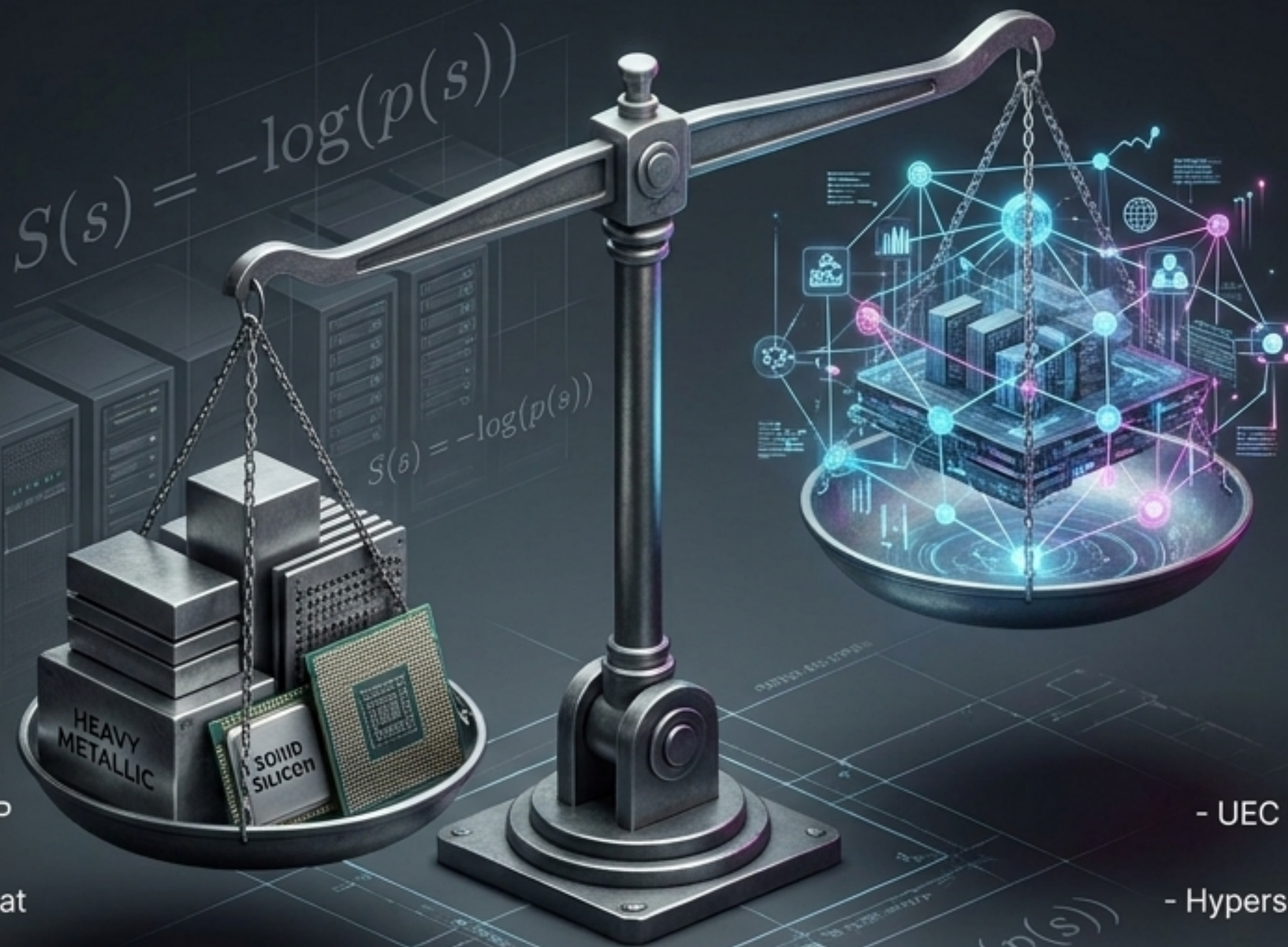
Market Democratization



Upgrades Tier 2/3 providers to AI-ready determinism instantly.

The Reality Check: Software Cannot Break the Laws of Physics

Despite its mathematical elegance, PTCP faces severe physical limitations against proprietary silicon and industry-level headwinds from unified hardware consortiums.



The Laws of Physics

- As a host-OS software intercept, PTCP cannot control physical silicon.
- InfiniBand's hardware guarantees win at the nanosecond level.
- In Greenfield builds, specialized chips physically eliminate bottlenecks.

Ecosystem Complexity

- UEC has backing from Broadcom, AMD, and Cisco.
- Hyperscalers own physical fiber, guaranteeing perfect software-hardware co-design.
- PTCP must dynamically adapt to disparate, unpredictable multi-vendor environments.

The Primary Market Strike Zone

PTCP is not attempting to unseat NVIDIA inside Microsoft. It captures the massive segment of the market actively avoiding vendor lock-in and priority supply chain delays.

Sovereign AI & Tier 2/3 CSPs

Nations and independent CSPs building AI who cannot secure or afford NVIDIA InfiniBand priority allocations.

High-Security Defense Edge

Tactical clusters demanding absolute zero-trust data synchronization via PoL-TT.

Enterprise OCS Transition

Data centers hitting power limits migrating to Optical Circuit Switching.

The Lucrative 'Bridge to UEC'

While the Ultra Ethernet Consortium promises a hardware revolution, it requires years of manufacturing and adoption. PTCP captures the immediate need, fixing stranded hardware today.

Today: Legacy Ethernet Bottlenecks

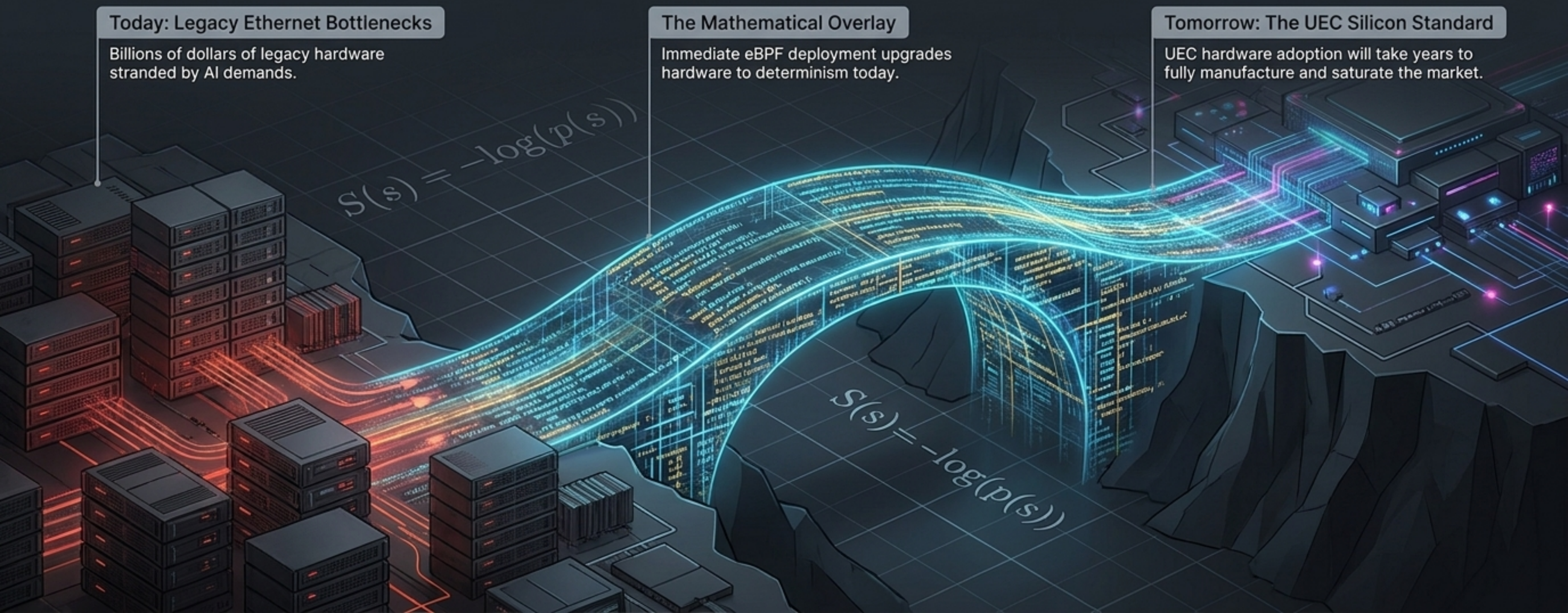
Billions of dollars of legacy hardware stranded by AI demands.

The Mathematical Overlay

Immediate eBPF deployment upgrades hardware to determinism today.

Tomorrow: The UEC Silicon Standard

UEC hardware adoption will take years to fully manufacture and saturate the market.



Maximizing ROI on Next-Gen AI Processors

By eliminating reactive protocol bottlenecks, PTCP's predictive pacing ensures that highly expensive next-gen GPUs and NPUs are constantly fed with data, maximizing compute utilization and preventing costly idle cycles.

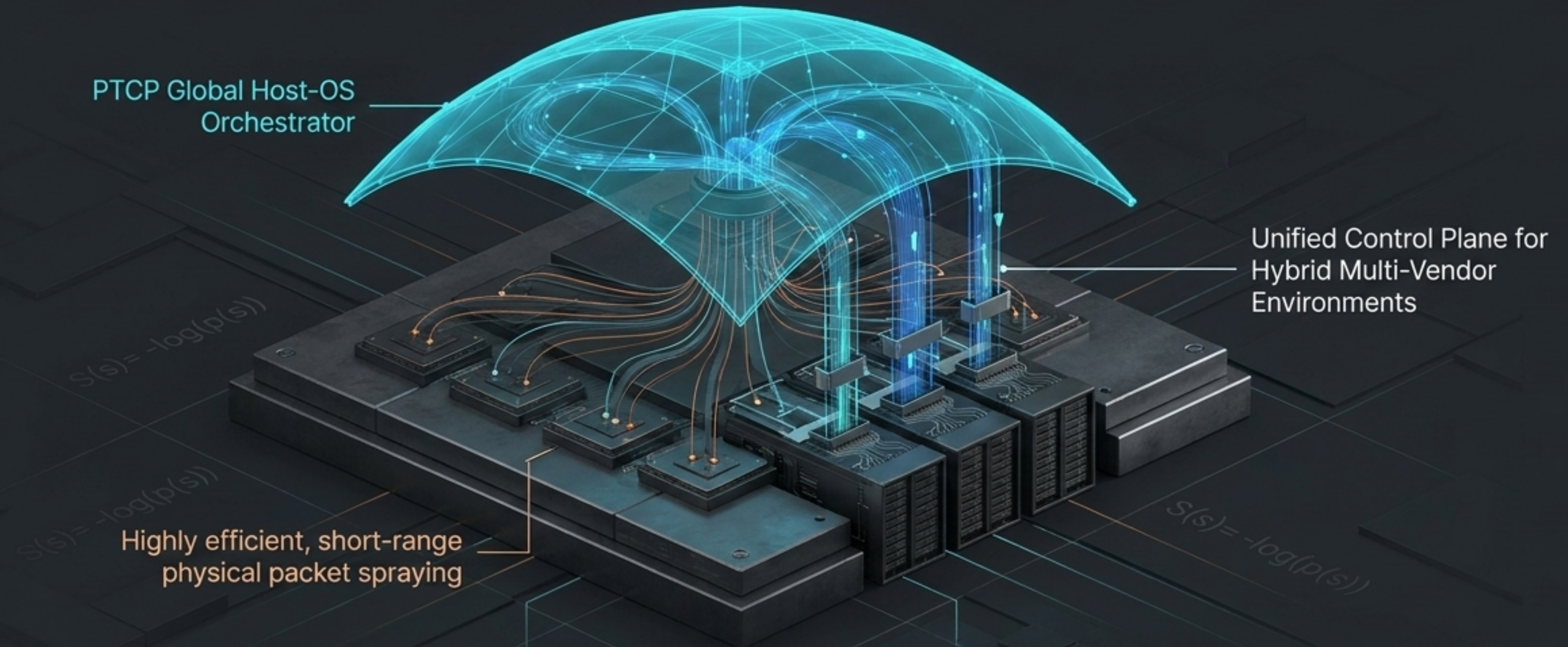


Zero Idle Cycles

The processor is rarely the bottleneck; the network is.

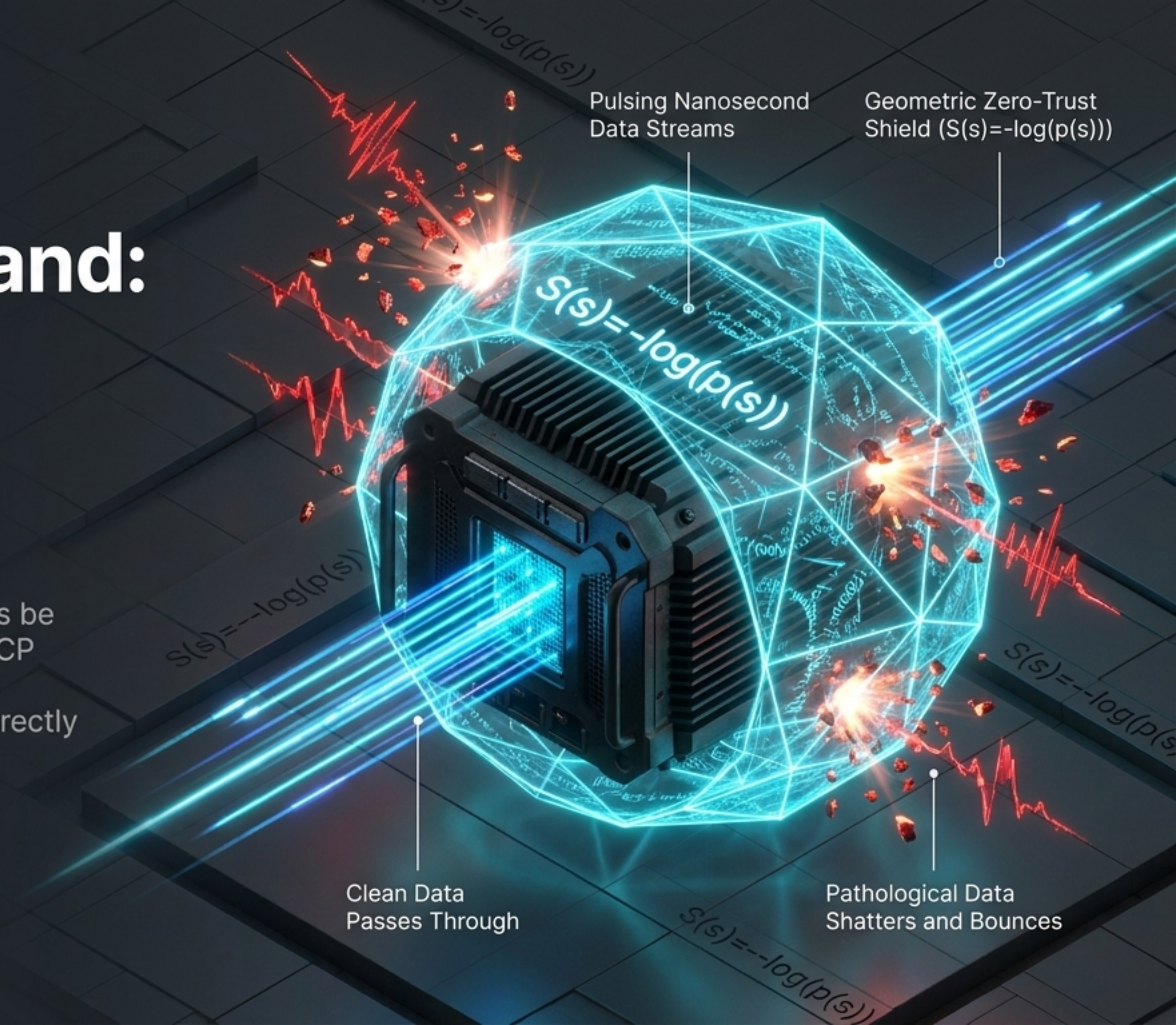
PTCP + UEC: Evolving from Bridge to Orchestrator

When UEC silicon inevitably saturates the market, PTCP evolves. While UEC efficiently sprays packets locally, PTCP acts as the global host-OS intelligent orchestrator and unified multi-vendor control plane.



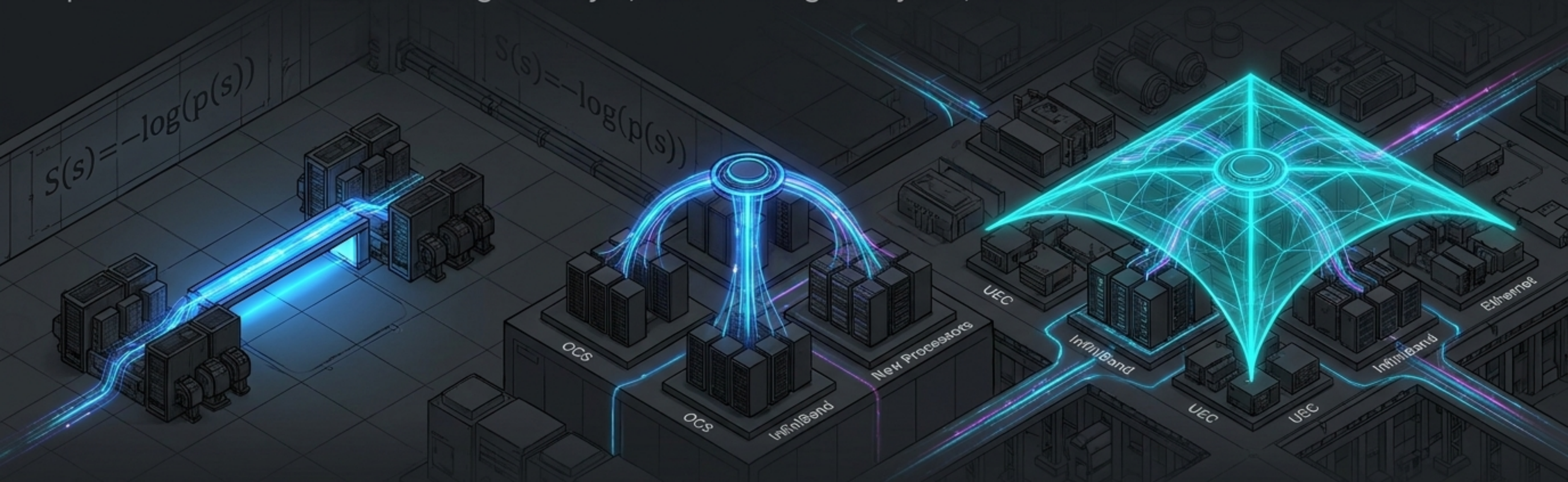
PTCP + InfiniBand: Zero-Trust at Nanosecond Speeds

InfiniBand's physical hardware will always be inherently faster. However, deploying PTCP on top of an InfiniBand cluster integrates absolute zero-trust anomaly detection directly into high-speed environments without degrading synchronization.



Synthesis: The Permanent Intelligence Layer

PTCP begins as an immediate, highly lucrative bridge to save CapEx today. It ultimately embeds itself as the permanent mathematical intelligence layer, orchestrating the hybrid, multi-vendor data center of the future.



Phase 1: The Bridge

Connecting legacy Ethernet to AI workloads.
Immediate CapEx savings today.

Phase 2: The Integrator

Sitting natively above a mixed environment of
emerging protocols and hardware.

Phase 3: The Permanent Canopy

Orchestrating all underlying hardware (UEC,
InfiniBand, Ethernet) as a unified intelligent layer.

**Upgrade to AI-ready
determinism today.**

$$S(s) = -\log(p(s))$$

**Define the future
via software.**