

# Escaping the Exascale Bottleneck: The Imperative for Tensor-Native AI Infrastructure

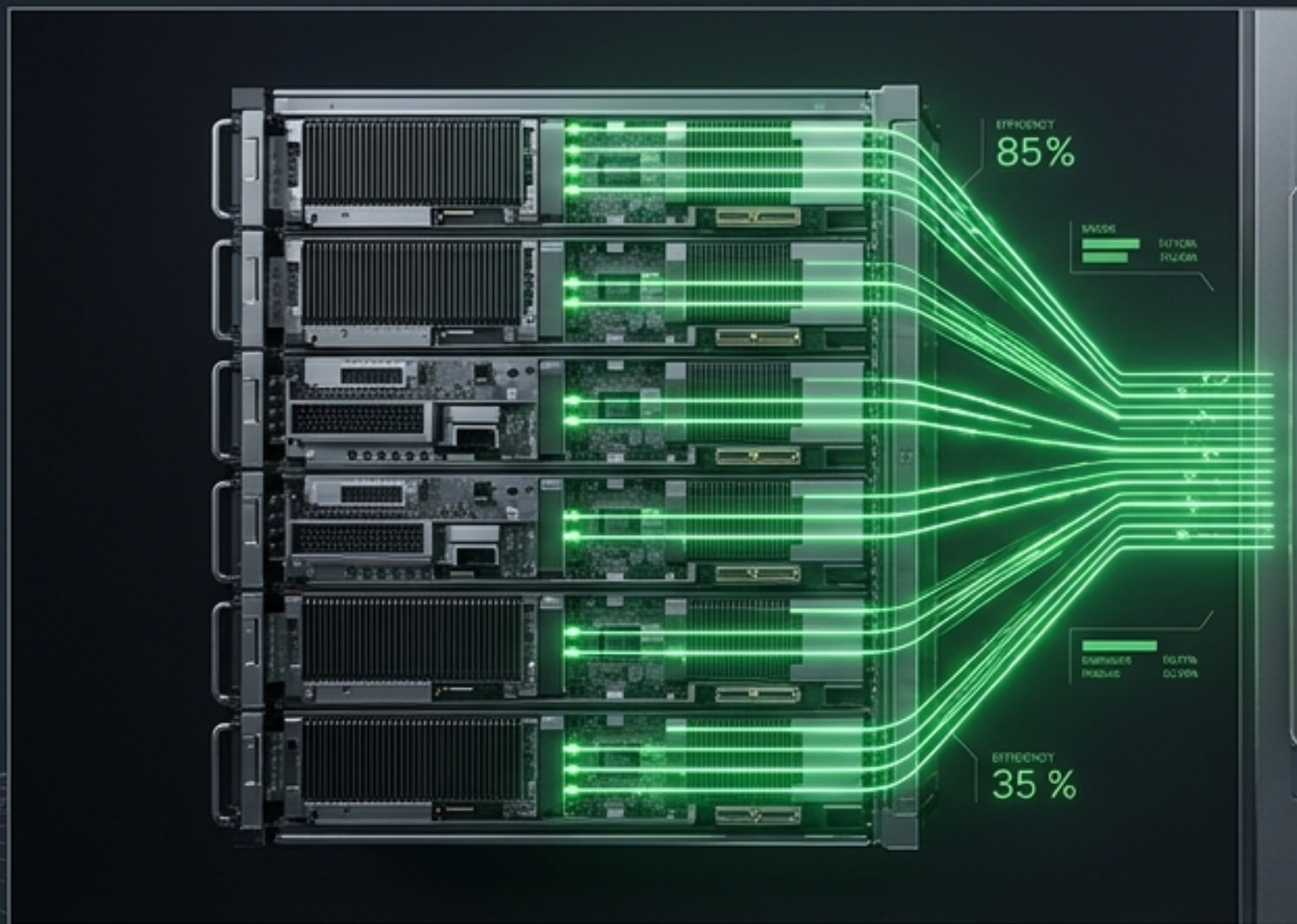
Prepared for: Hyperscale Infrastructure Owners, Enterprise Data Center Managers, and AI Fleet Architects

Focus: Cost Mitigation, Risk Reduction, and Technical Diligence on PTCP and TNQG

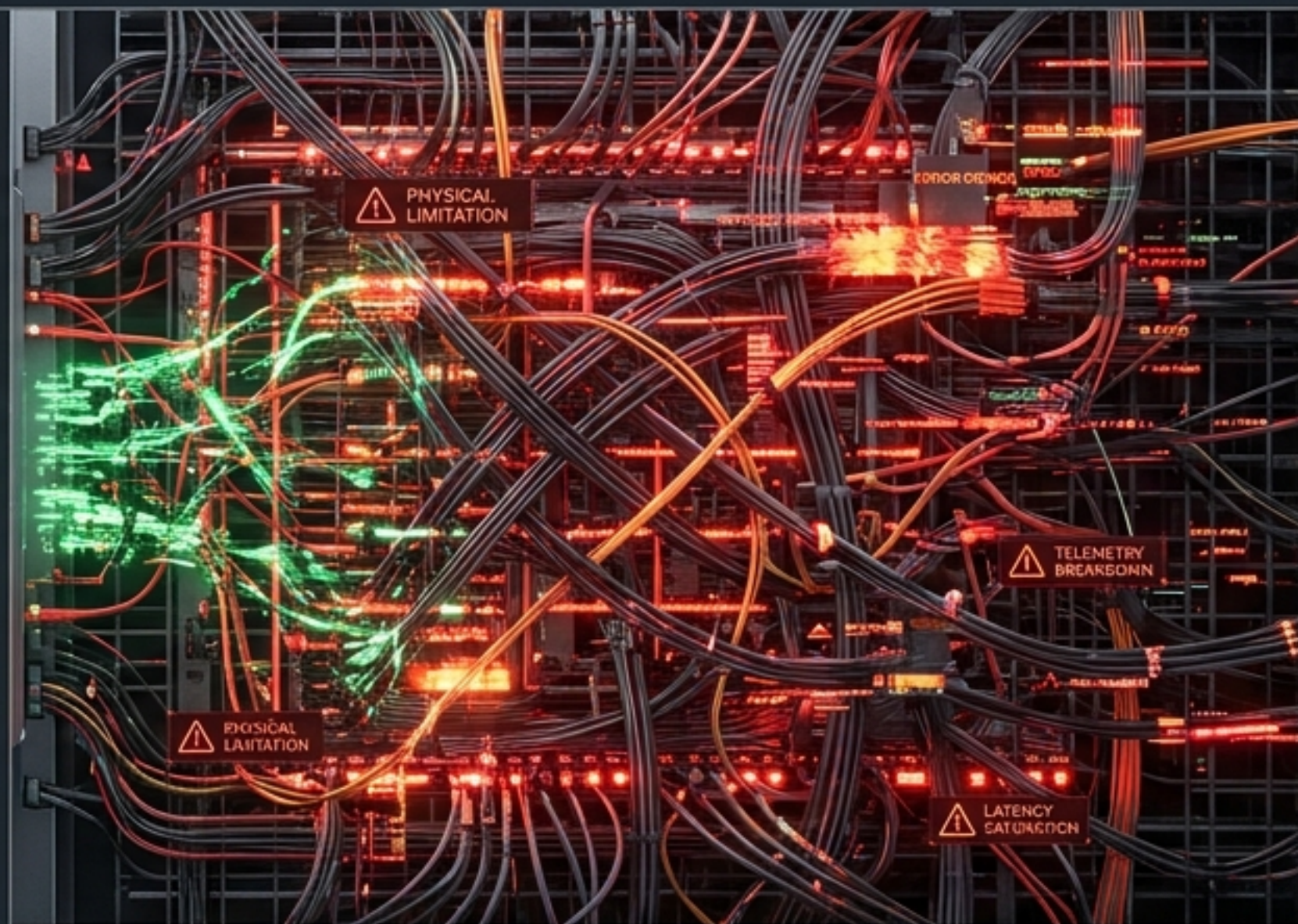


# Raw processor power is no longer the primary constraint in Exascale AI.

As AI foundation models demand training clusters exceeding 100,000 GPUs, classical networking infrastructure hits a physical limit. The bottleneck has definitively shifted away from compute capability to network synchronization and telemetry overhead.



UNCONSTRAINED COMPUTE CAPABILITY



NETWORK SYNCHRONIZATION & TELEMETRY BOTTLENECK

# The Straggler Effect

A single delayed node halts the entire global training pipeline.

SYNCHRONIZED GLOBAL GRADIENT UPDATE

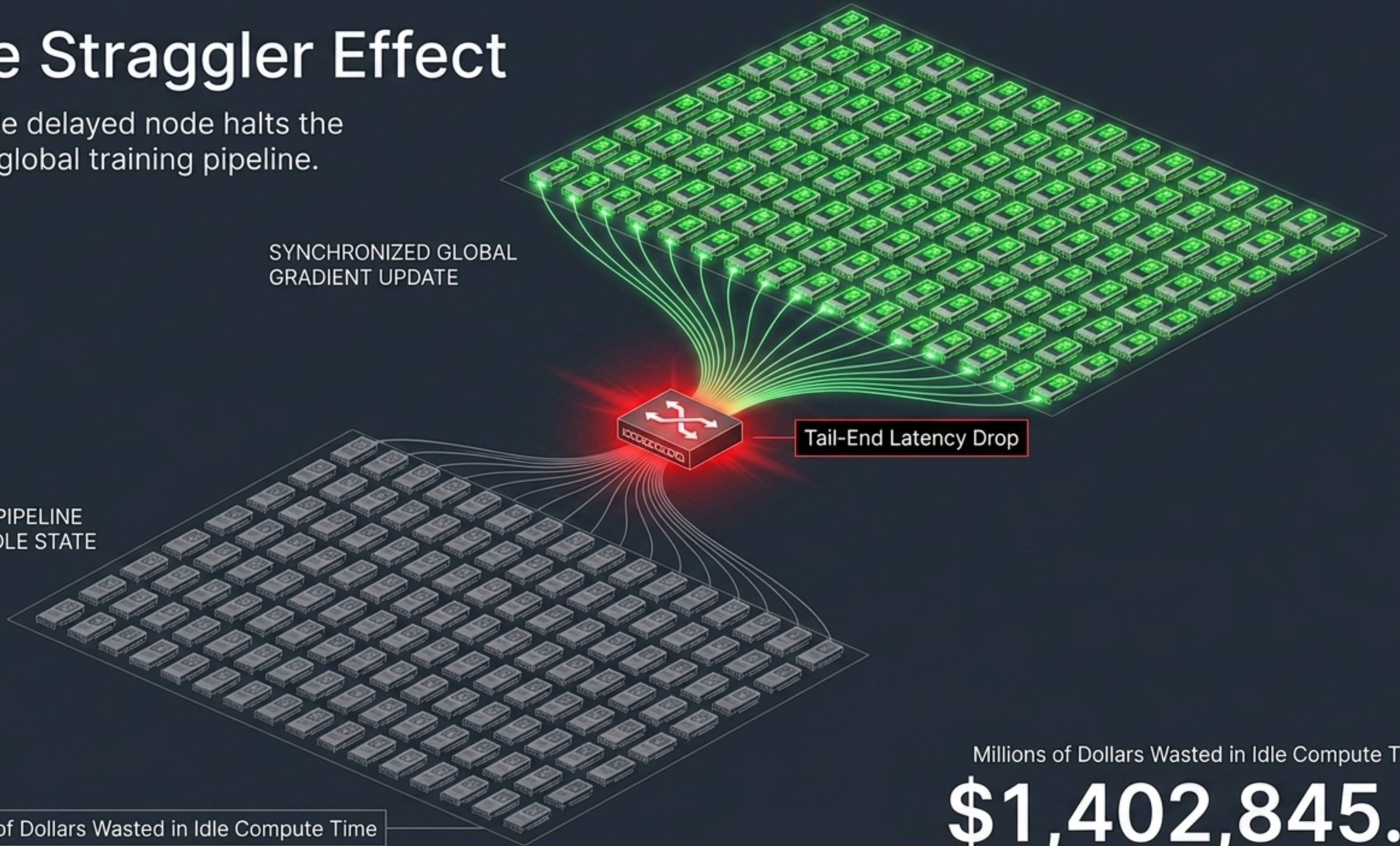
GLOBAL PIPELINE HALT & IDLE STATE

Tail-End Latency Drop

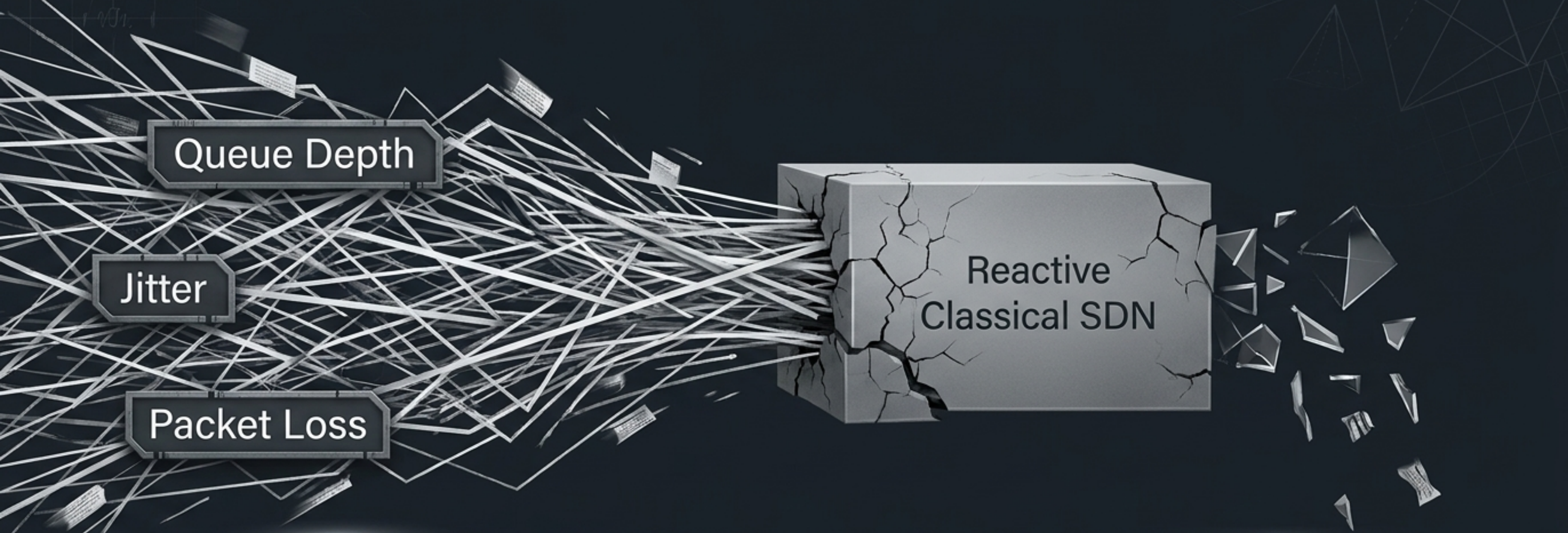
Millions of Dollars Wasted in Idle Compute Time

Millions of Dollars Wasted in Idle Compute Time:

**\$1,402,845...**

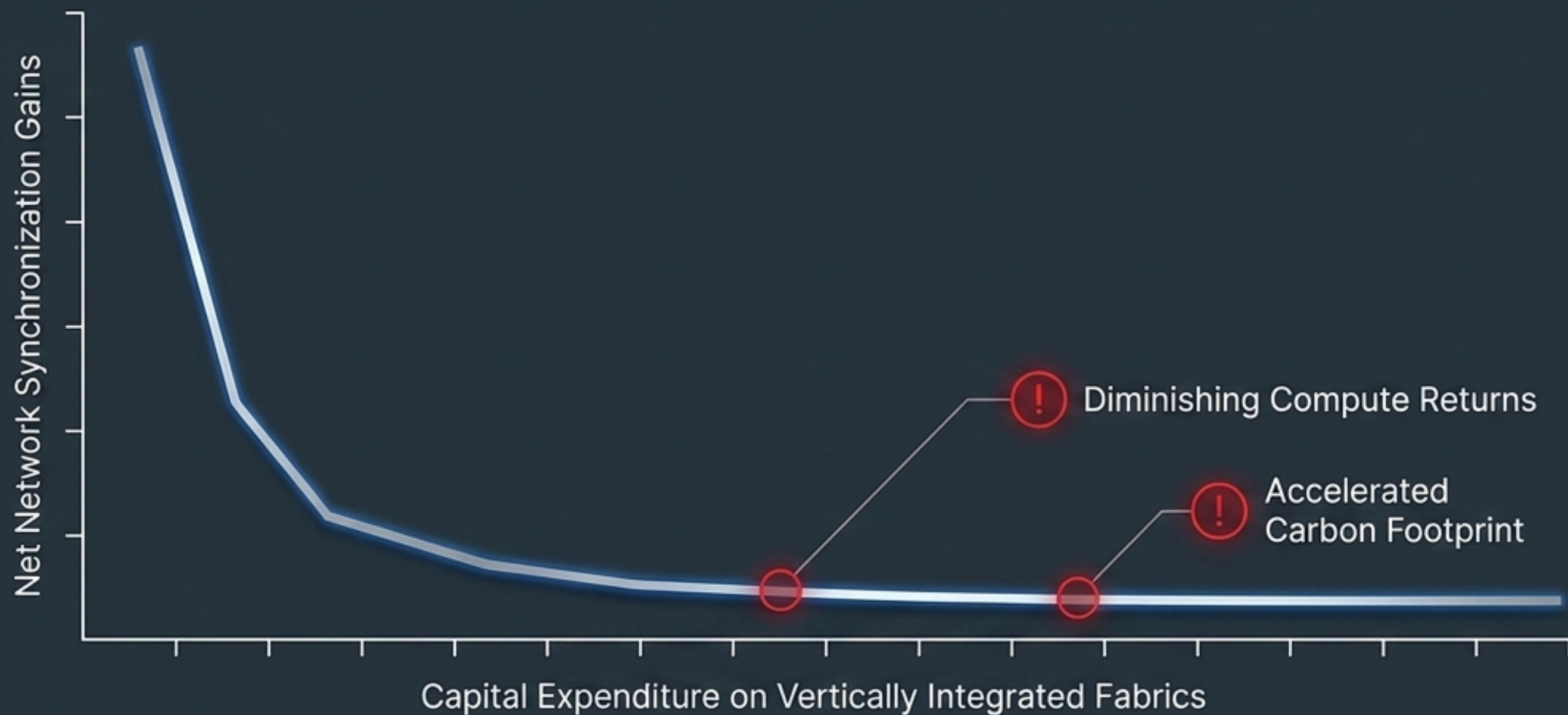


# Classical SDN controllers fail under the curse of dimensionality.



Traditional reactive routing evaluates scalar metrics independently and reactively. In large-scale networks, this continuous-space evaluation model is mathematically incapable of keeping pace with the data volume.

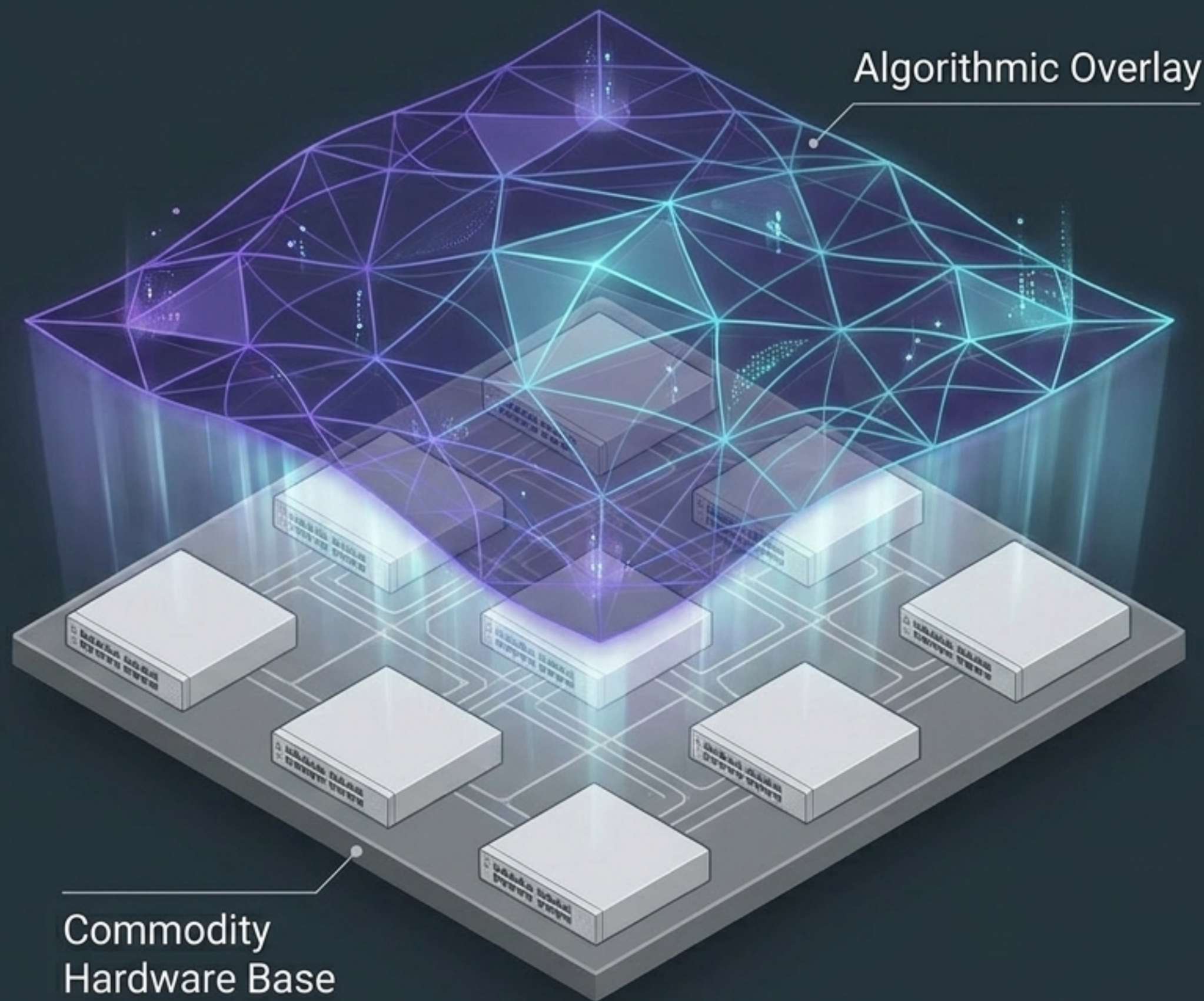
Throwing proprietary hardware at a mathematical problem yields diminishing returns.



You cannot escape the continuous-space physics bottleneck with thicker cables or larger power plants. The solution requires a new mathematical paradigm.

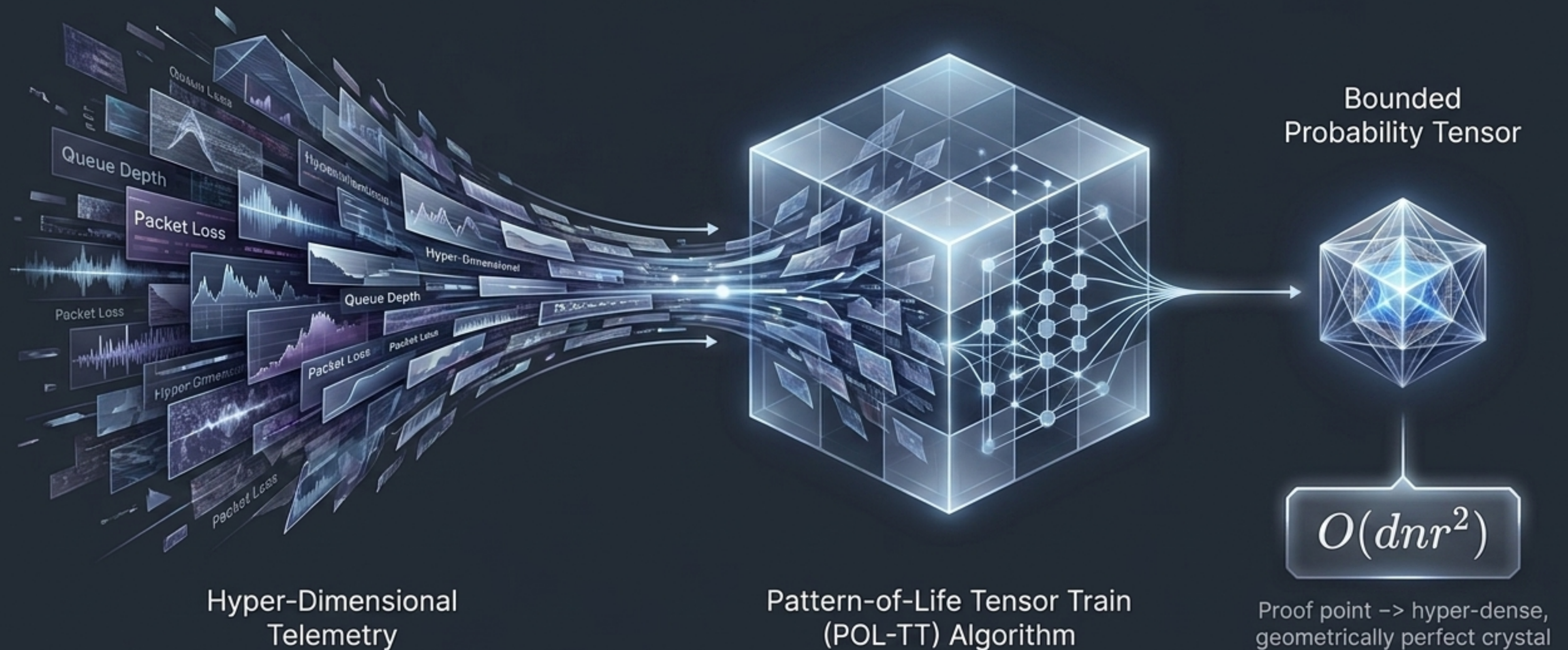
# Tensor Networks, Inc. is the algorithmic overlay for AI infrastructure.

Operating as the ARM of AI Infrastructure, our technology licenses IP directly as an algorithmic overlay. No forced hardware upgrades. No proprietary cables. Just pure mathematical efficiency.

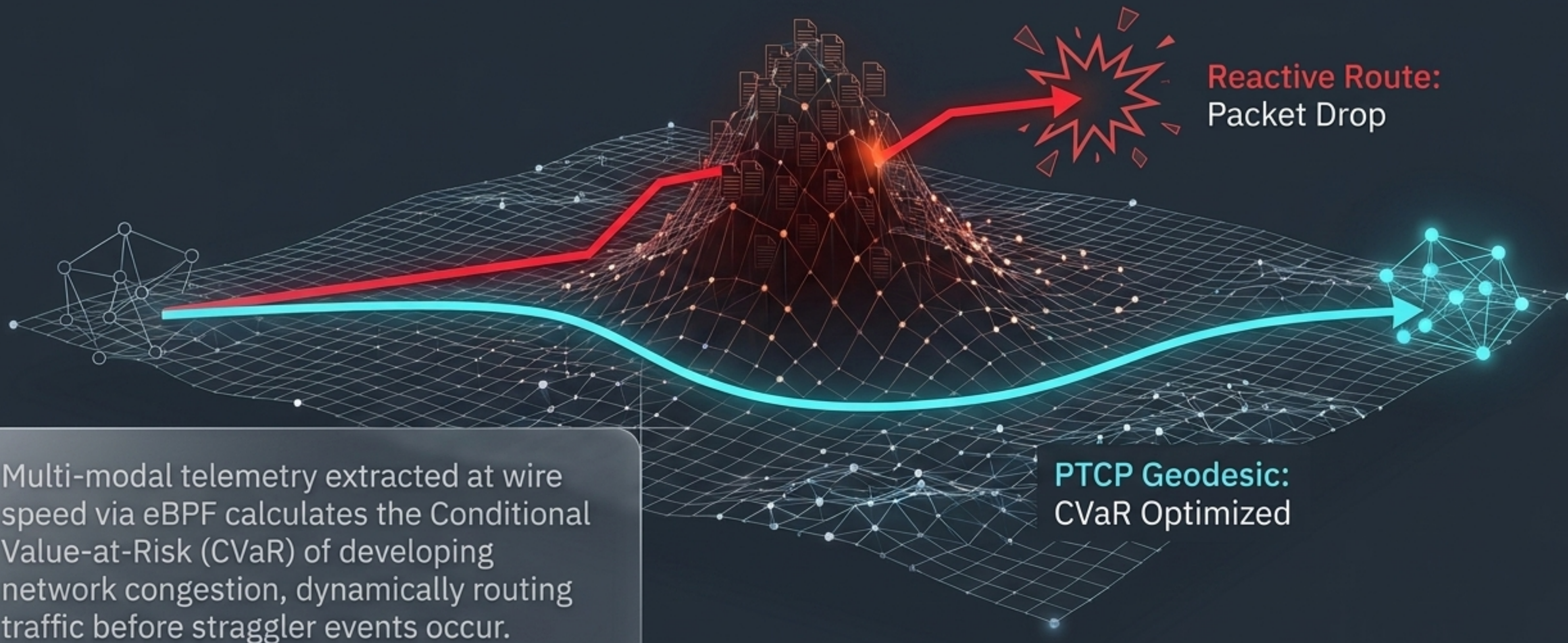


# PTCP bounds hyper-dimensional network chaos into predictable states.

By compressing network telemetry, the memory footprint is strictly limited to an  $O(dnr^2)$  scale.



# Predictive Geodesics guarantee lossless, tail-latency-free synchronization.



# Classical Simulation Architecture

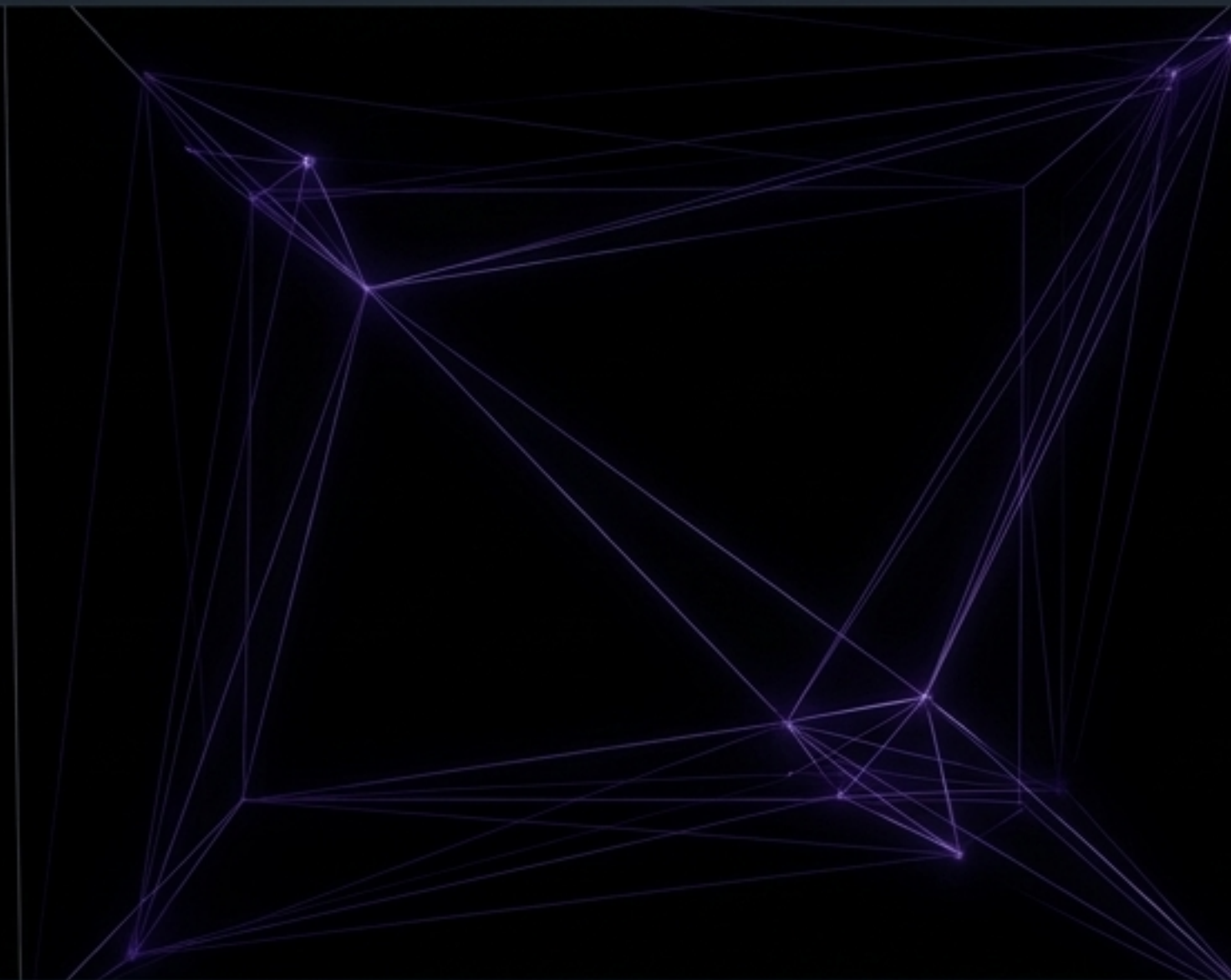
TNQG discards continuous spatial grids for emergent computational geometry.



**Exponential  
Memory Drain**

# Tensor-Native Simulation Architecture

Emergent Computational Geometry. Distance and structure are defined purely by interaction capacity (entanglement) between a few key active nodes, with vast empty spaces remaining mathematically coarse-grained.



# The Core Diagnostic: Classical Physics vs. Tensor Mathematics

Dimension	Classical Infrastructure	Tensor-Native Overlay
Telemetry	Reactive scalar metrics, Overwhelmed	Bounded probability tensors, $O(dnr^2)$
Routing	Continuous-space / Reactive	Predictive Geodesics / CVaR optimized
Spatial Simulation	Exponential memory continuous grids	Emergent geometry / Entanglement
Hardware Philosophy	Vertically integrated proprietary	Hardware-agnostic algorithmic overlays

# Transforming commodity switches into AI networking nodes via software.

Packaged perfectly for deployment on Intel Atom/Xeon-D architecture without requiring core infrastructural teardowns.

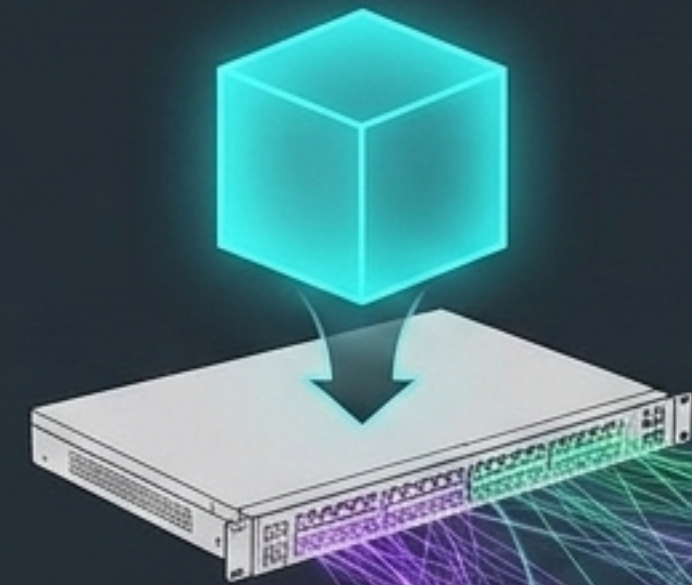
InfiniBand / Proprietary



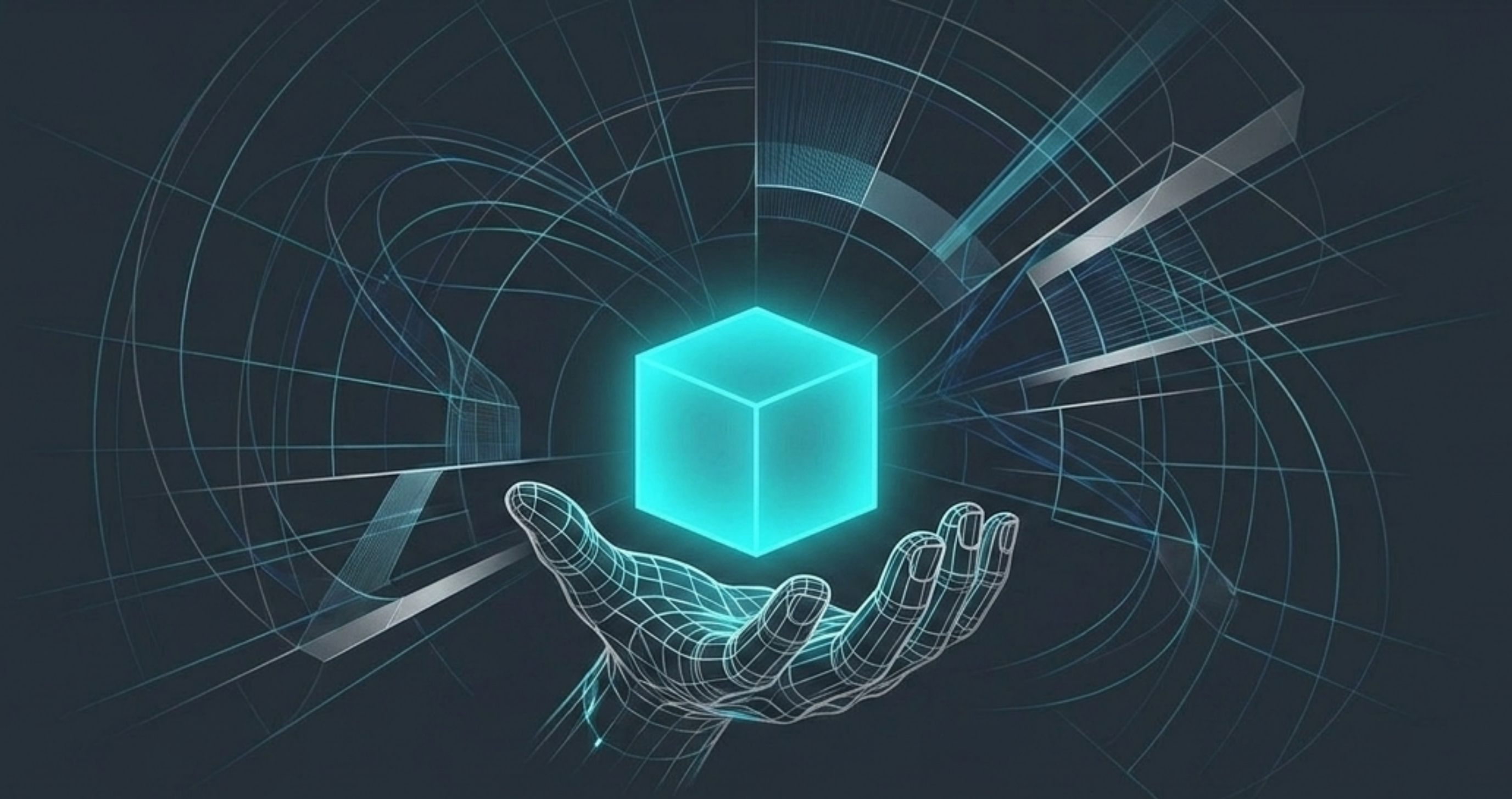
Open-Network Whitebox



eBPF-powered Docker Container



Packaged perfectly for deployment on Intel Atom/Xeon-D architecture without requiring core infrastructural teardowns.



# The Algorithm is the Infrastructure.

By shifting the battleground from continuous-space physics to pure bounded-probability mathematics, hyperscalers do not need to fight the laws of physics with more expensive cables. You can unlock Exascale AI using the commodity hardware you already own.

# Operational impact across cost and risk mitigation vectors.

Q1

## GPU Utilization (Cost)

CVaR-optimized geodesic routing anticipates congestion horizons, maximizing compute ROI and iteration speed.



Q2

## Energy Consumption (Cost)

PTCP incorporates an energy/operating cost variable ( $c_e$ ) directly into routing math, naturally steering workloads to surplus renewable regions.



Q3

## Cybersecurity (Risk)

Executes automated, payload-blind quarantines at the kernel level. Models traffic as topology, using a  $D_{\text{topo}}$  score to flag structural defects.



Q4

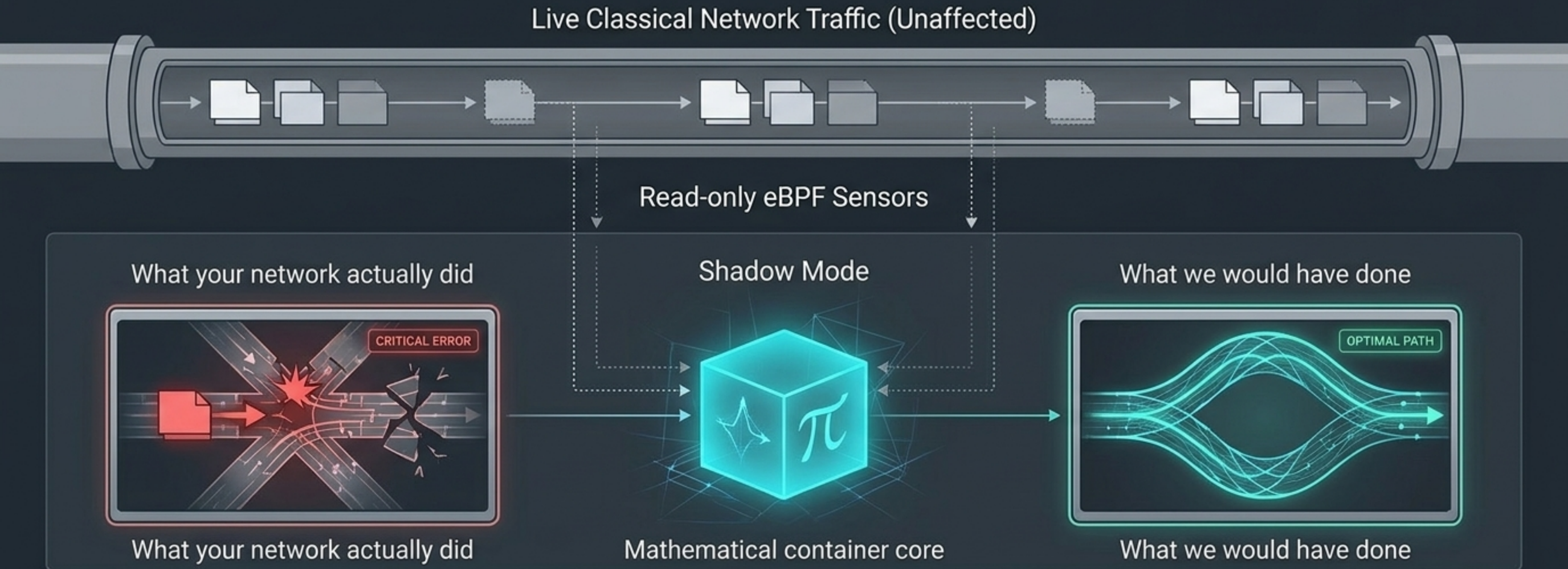
## Vendor Lock-In (Risk)

Hardware-agnostic Docker container upgrades standard whitebox hardware to outperform proprietary fabrics.



# Zero-risk deployment via Shadow-Mode architecture.

The PTCP software ingests network telemetry without actuating routes, running POL-TT compressions and predicting optimal paths in real-time.



# Mathematical proof over proprietary promises.

The shift to tensor-native networking is a mandatory architectural leap to secure multi-billion-dollar hardware investments. Migrating core infrastructure requires absolute mathematical proof.

## **Initiate a 30-Day Shadow-Mode Proof of Concept.**

Let the algorithm mathematically prove it successfully predicts congestion that your classical network fails to avoid. Once proven in your own environment, the ROI becomes indisputable.

You no longer have to choose between the vendor lock-in of proprietary AI fabrics and the reactive limitations of standard Ethernet.